



Forward Curved Fan Box – Direct Derive

FAN - BOX

FWD-D-S

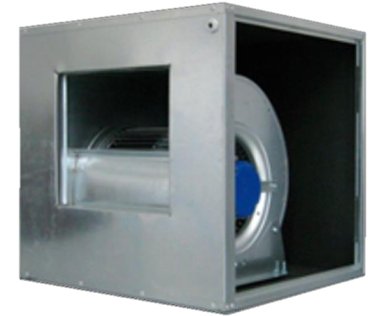


Unit features

Box Direct Driven fans with elastomeric lined internal cabinet or frame in extruded aluminum profiles, paneling and acoustic cladding equipped with High performance scroll type centrifugal fan, double inlet with forward-curved blade impeller for direct drive, statically and dynamically balanced in according to Iso standard G6.3.

Designed for use in professional ventilation systems, where low noise and compact installation required.

- Series composed by 4 sizes, with flowrate starting from 1500 m³/h up to 7.000 m³/h and pressure from 100 up to 500 Pa.
- Working temperature: +50°C;
- Cladding panels made in GI sheet steel, external painted or plasticized and galvanized internal, interposed with 25 mm of high density polyurethane foam, or Rockwall having a sound reduction and density not less than 24 kg/m³.
- Inspection door with lock system CE compliance, complete with handle
- Self-asynchronous single phase external rotor is connected to fan scroll frame by steel carriers. Three phase is limited to 12/12 6T.
- Single speed as default, linear voltage regulator speed control can be done. Three
- **POSITIONING:** Floor mounting, Shelf mounting and Ceiling mounting.



Fan Box – Forward Curved Direct derive



Scroll Type – Forward Curved
with External Rotor Motor

Applications

FWD-D box fans, the fans Box-FWD-D-S series are particularly designed for air extraction, supply or filtration. Their main characteristic is the low noise level which makes them ideal for compact installation and where the noise is an issue.

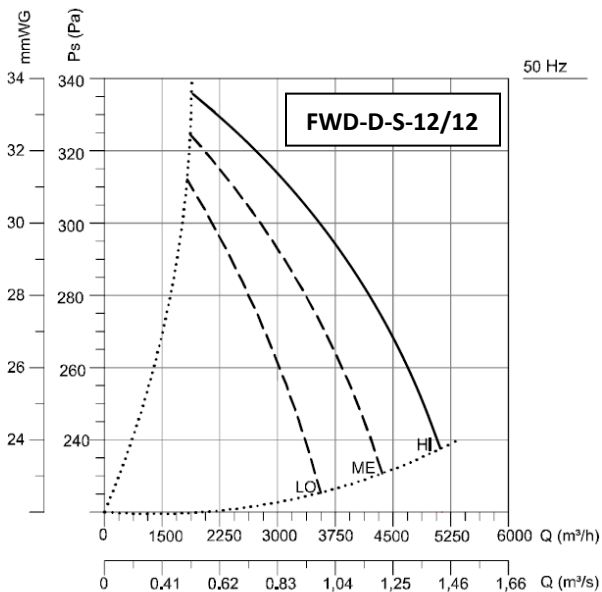
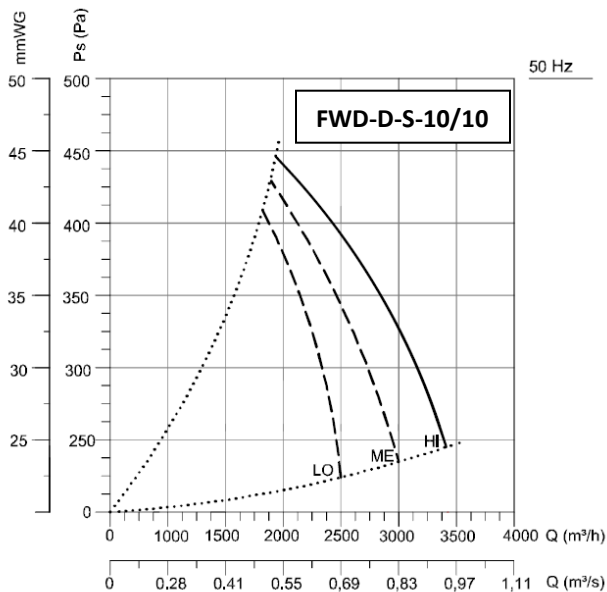
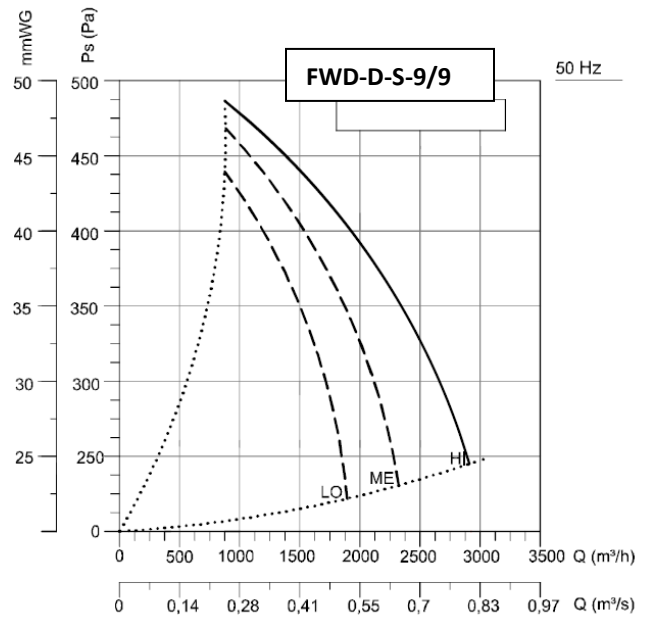
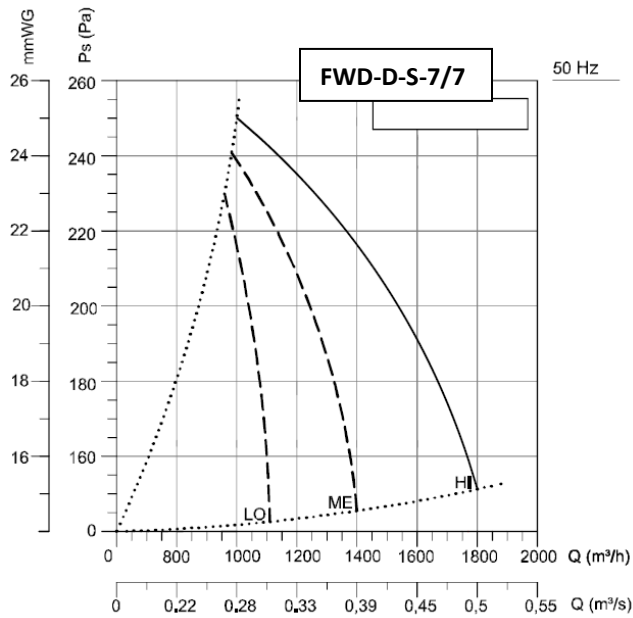
- Offices.
- Schools.
- Hospitals and medical facilities.
- Restaurants, cafeteria and canteens.
- Houses.
- Shops.
- Toilets

Engineering Data

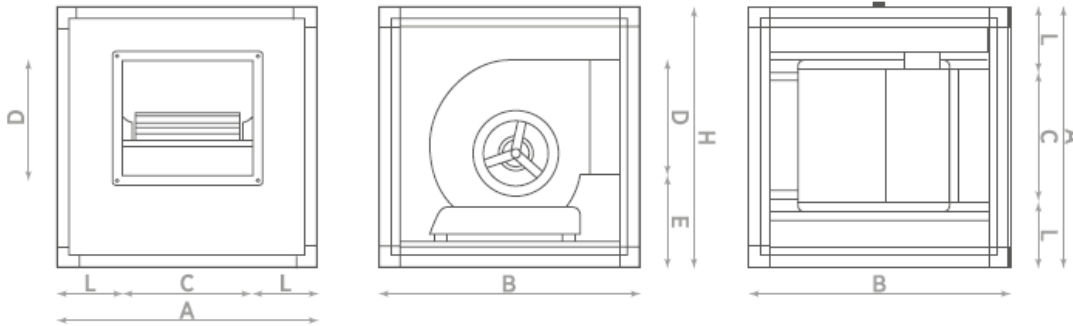
Technical Data

Model	voltage	Frequency	Flow Rate	Max press	Speed	weight	Motor	Poles	Power	Current	Capacitor	Noise	IP
Box Fan	V	hz	m3/h	Pa	Rpm	Kg	Phase	No.	Kw	A (230 V)	(η F)	dba (3m)	Protection
FWD-D-S 7/7 4M	230	50	1800	250	1300	20	Single	4	0.47	2.2	10	60	IP54
FWD-D-S 9/9 4M	230	50	2875	490	1300	29	Single	4	0.37	3.6	20	62	IP54
FWD-D-S 10/10 4M	230	50	3425	445	1300	33	Single	4	0.6	4.2	20	66	IP54
FWD-D-S 12/12 6M	230	50	5180	335	900	46,4	Single	6	1.1	5.8	30	62	IP54

Fan Curves



Unit Dimensions



Dimensions

Model		Outlet					
Box Fan	Size	A	H	B	C x D	E	L
FWD-D-S	7/7	500	500	500	232x210	188	184
FWD-D-S	9/9	600	600	600	302x265	195	149
FWD-D-S	10/10	600	600	600	328x294	225	169
FWD-D-S	12/12	650	650	700	389x347	250	180

*All dimensions in mm

Note: For fresh air intake fan box applications, the unit width "A" as well as distance "L", shall modified to full fill the filter face velocity required at design air flow.

Electrical Wiring – Motor

